



# Mandiri Investa Pasar Uang (Class A)

## Money Market Fund

NAV/Unit IDR 1.782,24

Reporting Date  
31 July 2025

Effective Statement  
S-3009/PM/2004

Effective Date  
24 September 2004

Custodian Bank  
Bank Citibank

Inception Date  
17 March 2005

Total AUM  
IDR 8,32 Trillion

Total AUM Share Class  
IDR 8,61 Trillion

Currency  
Indonesian Rupiah (IDR)

Pricing Frequency  
Daily

Minimum Initial Investment  
IDR 10.000

Number of Offered Units  
20.000.000.000 (Twenty Billion)

Management Fee  
Max 1,5% p.a

Custodian Fee  
Max. 0,25% p.a

Subscription Fee  
-

Redemption Fee  
-

Switching Fee  
Max. 1%

ISIN Code  
IDN000001302

Bloomberg Code  
MANIPUA : JJ

### Benefits Of Mutual Fund

- Professional Management
- Investment Diversification
- Investment Value Growth Potential
- Easy investment disbursement

### Main Risk Factor

- Risk of Deteriorating Economic and Political Condition
- Risk of Default
- Risk of Liquidity
- Risk of Diminishing of NAV of each participation unit
- Risk of Electronic Media Transaction
- Risk of Dissolution and Liquidation Market Risk

### Investment Period

< 33 - 5> 5

< 3 : Short Term

### Risk Period

Low

### Description

MIPU Fund Investing in Money Market with Low Term and categorized Low Risk. This Mutual fund's Portfolio carries various risks for investors.

### Information on Mutual Fund Ownership

Confirmation letter for subscription, redemption and switching of mutual funds are valid legal proof of mutual fund ownership issued and delivered by the custodian bank. In case there is Securities Ownership (AKSES) facility, Participation Unit Holders could see Mutual Fund ownership through this page <https://akses.ksei.co.id/>.

## About Mandiri Investasi

PT Mandiri Manajemen Investasi (Mandiri Investasi) is a separate subsidiary of PT Mandiri Sekuritas established in October 26, 2004. PT Mandiri Sekuritas is Indonesia's leading investment bank and a subsidiary of PT Bank Mandiri (Persero) Tbk., the country's largest state-owned Bank. Mandiri Investasi and/or its predecessors have been managing investment portfolios since 1993, with Business License Number: No. Kep-11/PM/MI/2004. Mandiri Investasi is one of the Indonesia's largest domestic mutual fund, with total assets under management totaling Rp. 44,15 Trillion (as of 31 July 2025).

## Custodian Bank

Citibank, N.A. has received approval as a Custodian Bank in the Capital Markets sector based on the Decree of the Chairman of the Capital Market Supervisory Agency No. KEP-91/PM/1991 dated October 19, 1991, therefore registered with and supervised by the Financial Services Authority (OJK).

## Investment Objective

Offering high liquidity to fulfill short-term cash requirements while delivering attractive investment returns

## Investment Policy\*

Money Market and/or Bonds\*\* : 100%

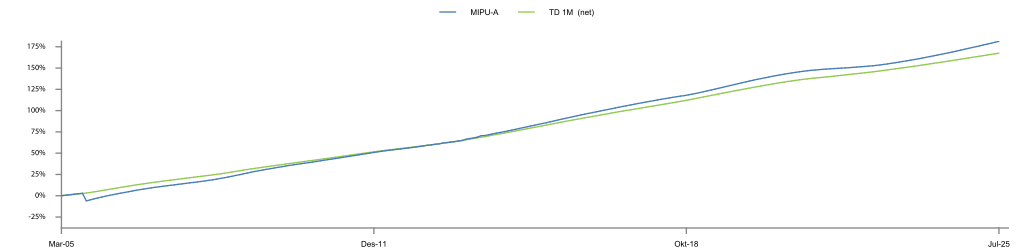
\*) exclude cash and equivalent  
)\*) maturing less than 1 year

## Portfolio Allocation\*

Deposit : 54,15%  
Bonds\*\* : 45,18%

\*) exclude cash and equivalent  
)\*) maturing less than 1 year

## Fund Performance

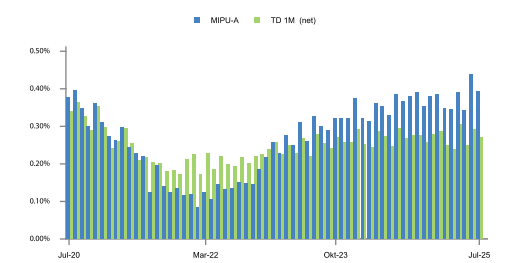


## Top Holdings

(In Alphabetical Order)

Bank DKI	Deposit	3,86%
Bank Mega Tbk.	Deposit	6,39%
Bank Nagari	Deposit	9,18%
Bank Riau Kepri Syariah	Deposit	7,67%
Bank Tabungan Negara (Persero) Tbk.	Deposit	4,36%
Bank Woori Saudara Indonesia 1906 Tbk.	Deposit	6,10%
BPD Jambi	Deposit	4,65%
Indah Kiat Pulp & Paper Tbk.	Bonds	5,52%
Pegadaian (Persero)	Bonds	6,86%
Sarana Multigriya Finansial (Persero)	Bonds	5,16%

## Monthly Return



## Performance - 31 July 2025

	1 Month	3 Months	6 Months	1 Year	3 Years	5 Years	YTD	Since Inception
MIPU-A	: 0,39%	1,18%	2,27%	4,60%	11,88%	17,52%	2,67%	181,39%
Benchmark*	: 0,27%	0,81%	1,61%	3,29%	9,66%	16,05%	1,90%	167,50%

\*Benchmark Description:  
Since February 2011, Benchmark change to TD 1 Month (nett)  
Since May 2010 - January 2011 Benchmark using SBI 3 Month  
Since December 2008 - April 2010 Benchmark using SBI 1 Month

Highest Month	(November 2005)	1,24%
Lowest Month	(September 2005)	-8,69%

This Mutual fund had the highest performance of 1,24% in November 2005 and reached the lowest performance of -8,69% in September 2005.

## Market Outlook

In July, BI rate cut set the tone for the market. SRBI rate has printed its lowest yield since the instrument was first launched, roughly in line with a decline in BI rate. Meanwhile, the majority of bank deposits declined by approx. 25bps nearing the end of the month. Following this, money market bond yields have also experienced a decline in July, with expectations for staying at low levels due to other potential BI rate cuts going forward. Money market fund remains a top choice for investors looking at short-term investments, given low inflation level and monetary rate that still hasn't bottomed out.

## Fund Bank Account

Citibank N.A., Indonesia  
RD Mandiri Investa Pasar UangA  
0-810525-002

PT Bank Mandiri (Persero). Tbk. Cabang Bursa Efek Indonesia, Jakarta  
REKSA DANA MANDIRI INVESTA PASAR UANG  
104-000-441-3436

**DISCLAIMER**  
INVESTMENT IN MUTUAL FUND CONTAIN RISK. PRIOR TO INVESTING IN MUTUAL FUND, POTENTIAL INVESTOR MUST READ AND UNDERSTAND THE PROSPECTUS. PAST PERFORMANCE DOES NOT GUARANTEE / REFLECT THE FUTURE PERFORMANCE OF THE FUND. FINANCIAL SERVICE AUTHORITY (OJK) NEITHER GIVE ANY STATEMENT TO APPROVE OR REJECT THE SECURITIES NOR EXPRESS THE ACCURACY OR ADEQUACY OF THE CONTENTS OF MUTUAL FUND'S PROSPECTUS. ANY CONTRADICTION STATEMENT SHALL BE LEGAL BREACH. MUTUAL FUND IS A CAPITAL MARKET PRODUCT AND NOT A PRODUCT PUBLISHED BY SELLING AGENT/BANKS THE SELLING AGENT OF THE FUND SHALL NOT RESPONSIBLE FOR ANY CLAIM AND RISKS OF THE MANAGEMENT OF THE MUTUAL FUND'S PORTFOLIO BY INVESTMENT MANAGER. This product information summary does not replace the Mutual Fund Prospectus and prepared by PT Mandiri Manajemen Investasi only for information needs and does not constitute an offer to buy or sell. All information contained in this document is presented correctly. If necessary, investors are advised to seek professional opinion before making an investment decision. Past performance is not necessarily a guide to future performance and is not also an estimate made to give an indication regarding future performance or trends.

PT Mandiri Manajemen Investasi is licensed and supervised by the Indonesia Financial Services Authority (Otoritas Jasa Keuangan) and every product offering is conducted by officers who are registered and supervised by the Indonesia Financial Services Authority (Otoritas Jasa Keuangan)

